



# The Cooma Mail

Summer  
2016/2017

## Presidents Report

*Cooma Monaro Railway Inc. held its General Elections on Sunday, 13 November 2016. The Committee was unopposed.*

*With the current committee the team works well together, it shows commitment, dedication and leadership.*

*The positions are as follows: President - David Patterson; Vice President - Gordon Strachan; Secretary - Esther Strachan; Public Officer - Matt Bourke; Treasurers position: Vacant.*

*Committee members: Glynn Kay, David Healy.*

*Congratulations and welcome to the committee.*

*From the CMR Committee we hope you had a very Merry Christmas and a Happy New Year.*

*The Suzuki Hi Rail has been now road registered well done James Sullivan, Matt Bourke and Gordon Strachan. There will be training to follow.*

*I would like to send our well wishes to Shirley Hart as Shirley has not been well. Our thoughts are with you James and Shirley.*

*David Healy has been out and about weed spraying and the work for the dole people continue whipper snipping in and around the precinct.*

*As you are all aware ARHS is in financial trouble so they have called in the Liquidator to see if they can trade out of their difficulty.*

*Members may rest assured that CMR has strong leadership and two way communication, commitment and dedication.*

*I'm expecting work to start at the station and the DLE's Office in May.*

*The THNSW Architect has to put his stamp of approval on the materials we use etc.*

*But in the meantime Gordon has been busy doing the application grant for sleepers and jewellery for the sum of \$50k.*

*Also we are calling for CMR volunteers to man the Railway Station between the hours Monday to Wednesday from 0900 to 1700 hours.*

*The Volunteers manning the Railway Station would be responsible for opening up the Railway Station, ensuring the people that work for the dole sign on and sign off and fill in their timesheets. Allocate the work for the dole there daily work duties and supervise and monitor the daily work progress of the task. Ensure all work for the dole people have been inducted to the site and are wearing correct PPE. There is also a small amount of office duties to be performed at the Railway Station.*

*A suitable roster will be worked out for the Volunteers to Open and Close the Station and Supervise the Work for the Dole people.*

*If you think you are able to give some time on regular basis please contact the station during opening hours or Contact David Patterson on 0404048264. Someone will get back to you or email me or [manager@cmrailway.org.au](mailto:manager@cmrailway.org.au)*

*David Patterson*

*President*



4422 hauls the northbound Cooma Mail into Queanbeyan. March 1985. Photo: Australian Rail Maps



SRA padlock, 4 wheeled powder van, Cooma yard. Photo Matt Bourke

## **Buildings and Grounds**

### **Cooma Yard Precinct:**

- Over the spring period and into early summer we have experienced the usual rapid growth of unwanted vegetation within the Cooma Yard Precinct. Whilst we have had the assistance of the Work for the Dole program participants, we have struggled to keep up with this growth. With perseverance by David Healy, Gordon Strachan and our Work for the Dole participants, we are slowly getting on top of this.

*On reflection, CMR will need to investigate the use of residual herbicides within the danger zone in an attempt to reduce the time spent undertaking weed spraying. This will then allow for better use of resources in the future. In addition, we are always on the lookout for anyone who may be able to assist CMR to maintain this important heritage precinct. So if you are able to use a brush cutter, field trimmer, mower, and other gardening equipment or have your chemical application card, we would appreciate hearing from you. If you are in a position to help, then please*

contact Grounds and Building Manager: Gordon Strachan on 0456 126 341.

- Our Buildings and Grounds Manager has commenced the process of putting together the next Stream 2 funding application for the next round 2017/2018. Currently costs are being sought from various suppliers and contractors and the application will need to be submitted to Transport Heritage NSW by February this year.

### **Work for the Dole Program:**

- Now is the time to reflect on the success of the initial Work for the Dole program that has now come to an end.

Over the last 6 months CMR and the wider community have seen various improvement and beatification occurring within the Cooma Yard Precinct. Not only have we seen the usual vegetation control tasks being performed, we have seen various painting works being completed, from buffer stops, stop blocks, fencing, point leavers, rodding, cable supports and more. We have seen regular cleaning of the Cooma Station Building and rubbish removal from within the precinct.

We were very lucky that one of our participants had previous experience working within an orchard and they were able to assist CMR by pruning all of the fruit trees located within the precinct.

CMR would like to take this opportunity to thank Max Solutions and MBC for their support in establishing this program. We would also like to thank all of our participants for their hard work over the last 6 months. We wish you all well in your future endeavours and please remember that if you have any spare time in

the future and you would still like to help out, the door will always be open and any offer is greatly appreciated.

CMR has successfully negotiated a new 6 month program to commence January 2017. We are also looking for anyone who would have some spare time and be able to assist with the supervision of participants for this round. The days the program will run are: Monday, Tuesday and Wednesday. If you are in a position to help, please contact: Gordon Strachan on 0456 126 341.

Gordon Strachan

### **Stream 2 Funding Program 2016/17:**

- It's been a slow start to this works program, but progress is being made. CMR have now appointed a Heritage Architect to assist with the project, as required by the Independent Funding Advisory Panel. Initial meetings were to take place prior to Christmas, but due to issues beyond our control they are now scheduled for early 2017. This will result in the work schedule being push out into the next financial year.

With this delay in the rollout of the works program it will be unlikely that CMR will see the opening of a museum any earlier than this time next year.



620/720 rail motor in candy. Photo: archive



5 ton goods crane, Nimmitabel. Photo: Matt Bourke

## Rail Infrastructure

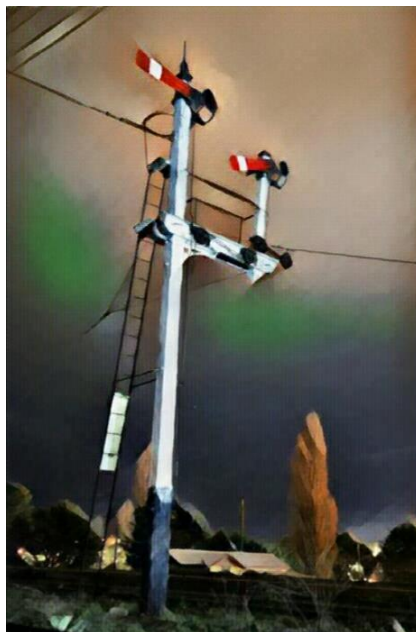
*CMR has made an application for round two of the Snowy Monaro Community Grants program to help us fund 600 sleepers and 3560 approved rail fasteners and items of equipment which will assist our volunteers with the replacement process. The positive outcome of a successful application in this regard will be the starting point for us to become an operating tourism railway in our own right once again. The associated track and infrastructure repairs is a massive undertaking and without the help of as many of our volunteers as possible it becomes much more daunting, so please feel free to come along and let your interest and skills be known.*

*This leads us on to our next grant application, the Volunteer Grants 2016. The \$5,000 applied for would be utilised to furnish the DLE's office when the capital work has been completed so that all of our active volunteers will have a*

*meals, amenities and locker room area to use whilst working within the precinct or on the permanent way. We recognise that although we are lucky enough to be the custodians of beautiful heritage rail equipment and associated trackage, our most valuable asset is our volunteer workforce and as a result we must make every effort to accommodate and care for them. We will keep you updated as this progresses.*

## Rolling Stock

*At this point in time there is no change to our rolling stock roster, the CPH's remain under secure storage within the loco shed and the 620/720's remain parked on the rails outside. The big news is of course we now have a Rolling Stock Manager! A big thank you to Mr Dave Healy, who has stepped up to this position of responsibility, bringing his many and varied skills to a job worthy of them.*



Cooma yard down home semaphore signal with a watercolour aspect  
Image: Matt Bourke

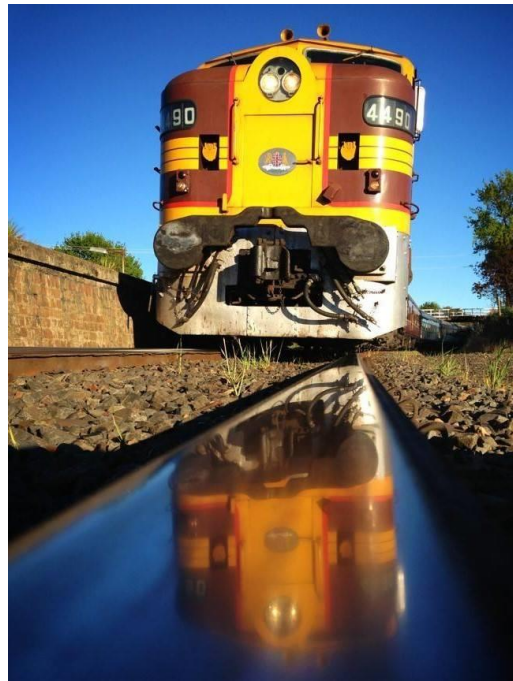
## Publicity Report

*It's all about engagement of the local community and making a wider social media awareness of the railway and its aims this quarter. As a result a few programmes have been initiated to further our cause. We have started to produce and sell quality framed photography and art not only online but locally also. The first round of picture sales on Facebook alone raised us almost \$550, not only adding a generous windfall to our coffers but also promoting our activities and beautiful precinct to a national audience. The response has been fantastic, with encouragement and support making itself aware on rail and tourist forums and our own Facebook page, which now numbers in excess of 1600 followers.*

*Thanks to Robert Carter and myself for the photos so far, but now it's your turn! If you have any quality photos of the precinct, or examples of heritage or contemporary rolling stock, please forward them to me at [publicity.officer@cmrailway.org.au](mailto:publicity.officer@cmrailway.org.au) for inclusion in this programme. Recognition, of course, will be given, with your name appearing within the frame and a limited run of 25 frames per image. Some examples have already reached 7 images sold!*



Water Column. CMR.



*An example of one of our top selling images, it's great to have a success, no matter how small. 44 class, a loco commonly rostered on the Kosciusko snow express.*

*Photo: Matt Bourke*

*As an expansion on this theme, on 18 December we fielded a small stall at the Cooma Rotary Markets to gain some local awareness and interest. I have to say this was a roaring success, as even though we only made approx. \$140, \$70 of that amount was in donations from locals that actually stopped and passed the time of day with me discussing the railway, its history and what it meant to them. Some of the older folk even recalled memories from their past and that made the day for me! Never forget that even though we are the custodians, we represent the local community as a whole, something that is very important to our aims and overall product branding.*

*If you have an interest in supporting the railway further by purchasing one of our beautiful prints, please feel free to email us at [manager@cmrailway.org.au](mailto:manager@cmrailway.org.au) and we can send you a list of pictures available.*

*Matt Bourke*

## High Rail

*The high rail has now being registered and is a working and reliable part of our equipment register. It was a timely process, nearly two years from planning to road ready stage, but we feel well worth it. Thanks to Gordon Strachan, James Sullivan and Matt Bourke for all the running about and last minute gremlins that we literally beat to death and ironed out to have our little vehicle that can back onto the precinct and doing its part. We plan to have accredited training in its safe and reliable rail operation coming up over the next few months once approval is received from ONRSR, so watch this space! Some of the improvements include, but are not limited to, a second battery, replacement wiring, headlight upgrade, data loggers and camera, powder coating of components and re-glazing. Thanks to all the members that contributed, you now have a unit we can all be proud of!*

## Museum

*As mentioned by President David at the AGM, one activity that has been quietly progressing in recent months is the cataloguing of hundreds of magazines and books which have accumulated at CMR over the years. In addition there have been some recent donations.*

*Of particular interest, are the 2000 or so magazines of railway and rail modelling subjects which have now been formed into a significant archive of information dating back to the early 1900's. There are, of course, many gaps in this record and to grow the collection*

*into a meaningful archive there is much work still to do. If we at CMR can achieve this we would undoubtedly have the largest archive of railway reference material in NSW and probably in Australia. What is preventing this project? In a word MONEY! None of our current or envisaged grants can be used for this purpose.*

*While Jim and Shirley Hart are constantly on the lookout for bundles of railway material heading to recycling or landfill, most of which can be rescued for free, they sometimes uncover material that needs to be purchased. In many cases these are found in charity sales such as Rotary, Lions or Lifeline and are in large batches costing more than the odd few dollars which these two members often contribute themselves.*

*CMR would like to set up a small member driven fund to capture this printed material and to enable us to negotiate with these organisations for a lower than normal price. Ideally six members contributing \$50 each would enable the purchase of about 1000 magazines to add to the CMR archive.*

*Alternatively twenty members contributing \$20 each would be even better. The usual tax deduction arrangements will apply to any contribution. None of this detracts from the need for any railway member who knows of or can acquire suitable material to let the CMR management know of its existence so that it is not lost.*

*If there are members who wish to support this project send an email to [manager@cmrailway.org.au](mailto:manager@cmrailway.org.au) - giving a contact number will get a quick response, or members can call Jim Hart on 02 6452 2859. There is an answering service on this number if required.*

*Jim Hart*

## Strategic Plan

*The updated CMR strategic plan has now being completed and is available to view at the station office between the hrs of 9am and 5pm Monday to Wednesday.*

*The updated plan is a modern and business driven model centred on providing a customer service based undertaking with the aim of being a self-sufficient business operating within a heritage rail framework based loosely on successful and contemporary ventures operating within the tourism industry Australia wide.*

*Essentially the purpose of strategic planning is to set overall goals for your business and to develop a plan to achieve them. It involves stepping back from your day-to-day operations and asking where your business is headed and what its priorities should be.*

*The next step is the creation of a business plan, currently under development, which works in conjunction with the strategic plan to deliver an A grade tourism attraction and self-sufficient business. This is a completely achievable aim, well within the reach of the organisation and its members. If you would like*

*a copy of the strategic plan please email us at: [publicity.officer@cmrailway.org.au](mailto:publicity.officer@cmrailway.org.au) and we will forward it to you.*



Our very own 625/725 hard at work in revenue service, Victoria St, Hunter Valley.

Photo: Robert Carter

## Positions

*We currently have a vacancy available for an Events and Services Manager which involves organising tours bookings, events such as car clubs, fetes and possible catering. If you feel you could handle these responsibilities, please contact us at [manager@cmrailway.org.au](mailto:manager@cmrailway.org.au)*



Cooma Monaro Express, Royalla. Photo: Archive

# ALL ABOARD!

## “Sponsor a sleeper”

*You can be involved and help support this great initiative by “sponsoring a sleeper”. When sponsoring a sleeper you will receive: a personalised Certificate of Appreciation, entry into a permanent register for display by Cooma Monaro Railway Inc. for future generations to observe and a tax deductible receipt for the amount of your donation. At \$60.00 a sleeper this is a small investment for a big cause!*



*The sleepers needed to get CMR back on track*

You can download an application form here <http://www.cmrailway.org.au/Sleeper%20Sponsorship%20form%20V3.pdf> or collect one from the Cooma Station.

## Cooma Monaro Railway Contact Details

**Telephone:** (02) 6452 7791

**Postal:** Cooma Monaro Railway Inc.  
PO Box 1327  
Cooma NSW 2630

**Facebook:** <https://www.facebook.com/pages/Cooma-Monaro-Railway-Inc/441413925960930>

**Website:** [www.cmrailway.org.au](http://www.cmrailway.org.au)

**Email:** General Information - [info@cmrailway.org.au](mailto:info@cmrailway.org.au)

Group Bookings - [groups@cmrailway.org.au](mailto:groups@cmrailway.org.au)

Media Enquiries - [publicity.officer@cmrailway.org.au](mailto:publicity.officer@cmrailway.org.au)

Membership Enquiries - [membership.officer@cmrailway.org.au](mailto:membership.officer@cmrailway.org.au)

Committee of Management - [secretary@cmrailway.org.au](mailto:secretary@cmrailway.org.au)

Don't forget to keep us informed of any changes to your personal details so that we can keep you up to date with what's going on at CMR. Please email [membership.officer@cmrailway.org.au](mailto:membership.officer@cmrailway.org.au) or mail your new details to: Attn Membership Officer, PO Box 1327 Cooma NSW 2630.

Well, it's time to swing a switch and move this Express out, so until next time....ALL ABOARD!!!



Switches inside the Cooma signal box. Photo: Matt Bourke

*Thank you to all the contributors to this edition of the Cooma Mail, please feel free to add your suggestions or any content you may have to our publication by emailing [publicity.officer@cmrailway.org.au](mailto:publicity.officer@cmrailway.org.au)*